

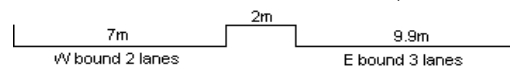
YEAR 2016

COVERAGE (B) STATION 2216

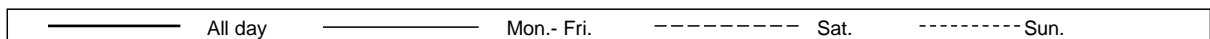
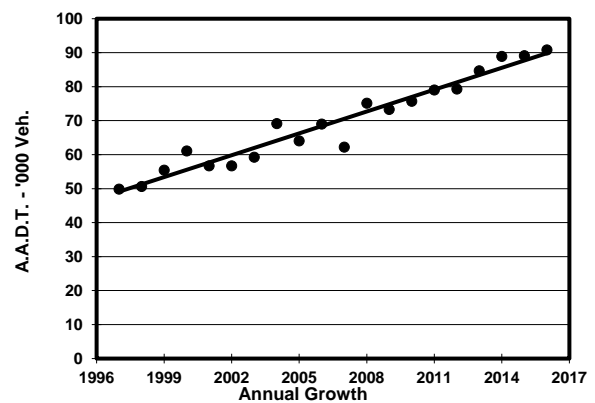
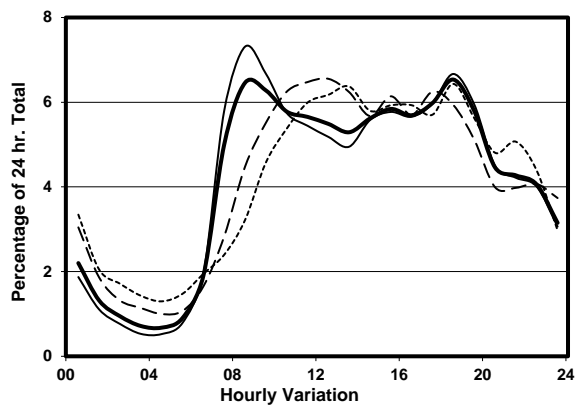
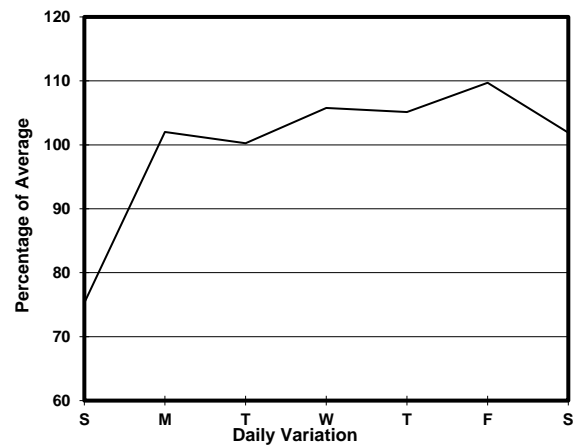
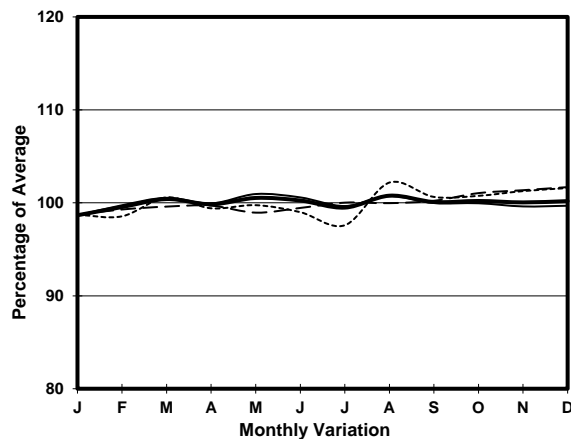
ROAD NETWORK MAJOR

ROAD TYPE PRIMARY DISTRIBUTOR

LINK CONNAUGHT RD FO <H173> (from RAMP NR GILMAN ST to THE NEAREST DIVERGING & MERGING POINTS WEST OF SHUN TAK CENTRE)



1. TRAFFIC FLOW VARIATION AND GROWTH



2. TRAFFIC CHARACTERISTICS (BY DIRECTION)

| Parameter | All - Day | Mon. - Fri. | Sat. | Sun. |
|--------------------------------------|-----------|-------------|-----------|-----------|
| EAST BOUND | | | | |
| A.A.D.T. | 43430 | 46240 | 44630 | 32260 |
| R 12 / 24 - % | 72.8 | 74.2 | 71 | 66 |
| R 16 / 24 - % | 88.8 | 90 | 86.2 | 84.3 |
| AM Peak Hour | 0800-0900 | 0800-0900 | 0900-1000 | 0900-1000 |
| One-way flow at AM peak hour | 3380 | 4110 | 2940 | 1500 |
| T - % (AM) | - | 5.6 | - | - |
| PM Peak Hour | 1800-1900 | 1800-1900 | 1800-1900 | 1800-1900 |
| One-way flow at PM peak hour | 2560 | 2700 | 2490 | 2160 |
| T - % (PM) | - | 6.2 | - | - |
| Prop.of commercial vehicles - 16 hr. | - | 6.2 | - | - |
| WEST BOUND | | | | |
| A.A.D.T. | 47330 | 49950 | 49090 | 36920 |
| R 12 / 24 - % | 66.7 | 67.6 | 65.4 | 62.1 |
| R 16 / 24 - % | 87.6 | 88.9 | 84.2 | 83.4 |
| AM Peak Hour | 0800-0900 | 0800-0900 | 0900-1000 | 0900-1000 |
| One-way flow at AM peak hour | 2480 | 2920 | 2230 | 1660 |
| T - % (AM) | - | 7.2 | - | - |
| PM Peak Hour | 1800-1900 | 1800-1900 | 1700-1800 | 1600-1700 |
| One-way flow at PM peak hour | 3370 | 3710 | 3380 | 2300 |
| T - % (PM) | - | 4.8 | - | - |
| Prop.of commercial vehicles - 16 hr. | - | 4.8 | - | - |

3. OTHER INFORMATION AND COMMENT

Coverage (B) Station 2216
Year 2016

4. Vehicle classification and occupancy - Monday to Friday

| Time | | Class of vehicle | | | | | | | | | |
|------------------------|-----|------------------|---------|------|---------|------|------------|-------|---------|---------|------|
| | | Motor | Private | Taxi | Private | PLB | Goods veh. | | Non | Fr. Bus | |
| | | Cycle | Car | | LB | | Light | M & H | Fr. Bus | SD | DD |
| 0700-0800 | Pro | 3.9 | 32.6 | 36.1 | 2.2 | 1.9 | 15.8 | 2.8 | 3.2 | 0.0 | 1.6 |
| | Ocp | 1.1 | 1.3 | 2.0 | 7.2 | 7.8 | 1.3 | 1.2 | 17.3 | 0.0 | 22.0 |
| 0800-0900 Peak hour | Pro | 2.7 | 50.0 | 29.2 | 0.7 | 1.1 | 9.9 | 1.9 | 2.7 | 0.0 | 1.8 |
| | Ocp | 1.0 | 1.4 | 1.9 | 7.7 | 12.3 | 1.7 | 1.3 | 23.0 | 0.0 | 32.0 |
| 0900-1000 | Pro | 1.5 | 45.4 | 29.8 | 0.3 | 1.1 | 15.6 | 3.2 | 1.4 | 0.0 | 1.7 |
| | Ocp | 1.0 | 1.4 | 2.0 | 1.6 | 11.2 | 1.7 | 1.5 | 18.2 | 0.0 | 14.2 |
| 1000-1100 | Pro | 1.5 | 41.1 | 29.2 | 0.9 | 1.3 | 20.9 | 2.7 | 1.0 | 0.0 | 1.5 |
| | Ocp | 1.0 | 1.5 | 2.1 | 3.4 | 7.5 | 1.5 | 1.4 | 12.6 | 0.0 | 9.7 |
| 1100-1200 | Pro | 2.0 | 41.9 | 27.8 | 0.9 | 1.2 | 21.1 | 2.8 | 1.1 | 0.1 | 1.2 |
| | Ocp | 1.0 | 1.4 | 2.1 | 2.6 | 3.9 | 1.5 | 1.5 | 13.6 | 1.0 | 10.3 |
| 1200-1300 | Pro | 1.7 | 43.9 | 28.8 | 1.2 | 1.3 | 16.1 | 3.4 | 2.5 | 0.0 | 1.3 |
| | Ocp | 1.1 | 1.5 | 1.9 | 6.1 | 6.6 | 1.5 | 1.2 | 15.6 | 0.0 | 11.7 |
| 1300-1400 | Pro | 2.0 | 42.0 | 30.6 | 1.1 | 1.0 | 18.1 | 2.4 | 1.8 | 0.0 | 1.0 |
| | Ocp | 1.1 | 1.5 | 2.3 | 2.0 | 7.4 | 1.5 | 1.4 | 13.3 | 0.0 | 16.6 |
| 1400-1500 | Pro | 2.3 | 46.5 | 25.7 | 0.6 | 1.0 | 18.4 | 2.8 | 1.5 | 0.0 | 1.2 |
| | Ocp | 1.1 | 1.4 | 2.2 | 8.3 | 7.5 | 1.6 | 1.3 | 16.4 | 0.0 | 12.3 |
| 1500-1600 | Pro | 1.2 | 51.1 | 26.0 | 0.8 | 0.6 | 15.5 | 2.1 | 1.7 | 0.0 | 1.1 |
| | Ocp | 1.0 | 1.5 | 2.3 | 6.2 | 11.6 | 1.5 | 1.4 | 14.1 | 0.0 | 11.5 |
| 1600-1700 | Pro | 2.1 | 49.2 | 25.6 | 1.1 | 0.8 | 15.9 | 1.8 | 2.4 | 0.0 | 1.2 |
| | Ocp | 1.0 | 1.6 | 2.3 | 4.6 | 9.3 | 1.6 | 1.4 | 8.9 | 0.0 | 14.8 |
| 1700-1800 | Pro | 3.9 | 49.9 | 25.0 | 0.6 | 1.2 | 13.2 | 2.0 | 2.7 | 0.0 | 1.5 |
| | Ocp | 1.1 | 1.4 | 2.5 | 1.7 | 13.4 | 1.5 | 1.4 | 13.8 | 0.0 | 18.3 |
| 1800-1900 | Pro | 2.8 | 58.4 | 24.5 | 0.3 | 1.7 | 6.9 | 0.6 | 3.3 | 0.0 | 1.5 |
| | Ocp | 1.1 | 1.4 | 2.4 | 2.0 | 13.6 | 1.5 | 1.3 | 27.8 | 0.0 | 26.8 |
| 1900-2000 | Pro | 1.9 | 59.8 | 29.7 | 0.2 | 1.2 | 2.8 | 0.6 | 2.4 | 0.0 | 1.4 |
| | Ocp | 1.0 | 1.3 | 2.2 | 1.3 | 12.4 | 1.4 | 1.1 | 19.0 | 0.0 | 27.9 |
| 2000-2100 | Pro | 2.4 | 50.7 | 37.7 | 0.2 | 1.3 | 3.6 | 1.3 | 1.0 | 0.0 | 1.7 |
| | Ocp | 1.3 | 1.5 | 1.9 | 1.5 | 4.5 | 1.3 | 1.4 | 13.1 | 0.0 | 9.8 |
| 2100-2200 | Pro | 3.3 | 45.6 | 44.2 | 0.1 | 1.4 | 1.9 | 2.1 | 0.3 | 0.0 | 1.2 |
| | Ocp | 1.1 | 1.4 | 2.0 | 1.0 | 3.5 | 1.2 | 1.3 | 3.5 | 0.0 | 12.4 |
| 2200-2300 | Pro | 2.1 | 46.0 | 44.7 | 0.0 | 1.2 | 2.4 | 1.3 | 1.0 | 0.0 | 1.2 |
| | Ocp | 1.2 | 1.4 | 2.1 | 0.0 | 8.7 | 1.4 | 1.3 | 9.8 | 0.0 | 9.6 |
| 16 hours | Pro | 2.3 | 47.6 | 30.1 | 0.7 | 1.2 | 12.7 | 2.1 | 1.9 | 0.1 | 1.4 |
| | Ocp | 1.1 | 1.4 | 2.1 | 4.7 | 9.1 | 1.5 | 1.4 | 17.1 | 1.0 | 17.6 |

Legend

Pro. Proportion of vehicles in % (Sum may not add up to 100% due to figure rounding)*

Ocp. Average occupancy of vehicles including both driver and passengers*

M&H Medium and Heavy

***** All traffic data are collected from combined bounds except for one way traffic